

Axial spool valves

Connection: 1/8", 1/4", 1/2"

AXIAL SPOOL VALVES



Ideal for industrial applications

High flow rate

 Anodised aluminium body
 Other metal components

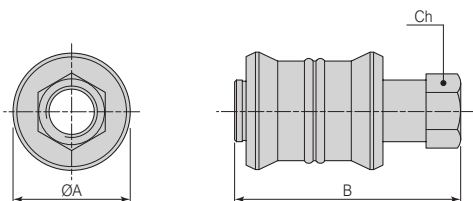
3/2 manual operation

TECHNICAL FEATURES

Function	3/2		
Operation	Manual - Bistable		
Materials	Anodised aluminium alloy body - Chromed brass rod - Harmonic steel Seeger NBR gaskets		
Note on materials	Compliant with REACH (1907/2006/EC and subsequent amendments)		
Connections	Size A: 1/8" Gas Size B: 1/4" Gas Size C: 1/2" Gas		
Threads	Cylindrical Gas (BSPP)		
Operating temperature	0°C ÷ 80°C (-20°C with dry air, to avoid ice formation)		
Operating pressure	0 ÷ 10 bar		
Air flow rate			
Connection	Size A - 1/8"	Size B - 1/4"	Size C - 1/2"
Nominal diameter	3.5 mm	7 mm	11 mm
Supply pressure	5 bar	514 NI/min	840 NI/min
(with ΔP 1 bar)	6 bar	600 NI/min	980 NI/min
	7 bar	685 NI/min	1119 NI/min
Fluid	Filtered air, lubrication-free, compliant with ISO 8573-1:2010 [7:4:4]		
Lubrication	Not required (if required in the pneumatic circuit, it must be continuous)		

AXIAL SPOOL VALVES

MANUAL OPERATION - BISTABLE



Symbol	Way	Size	Connections	ØA	B	Ch	Code
	3/2 NC	A	Gas 1/8"	25	48	14	39001
		B	Gas 1/4"	30	58	17	39003
		C	Gas 1/2"	40	80	26	39006