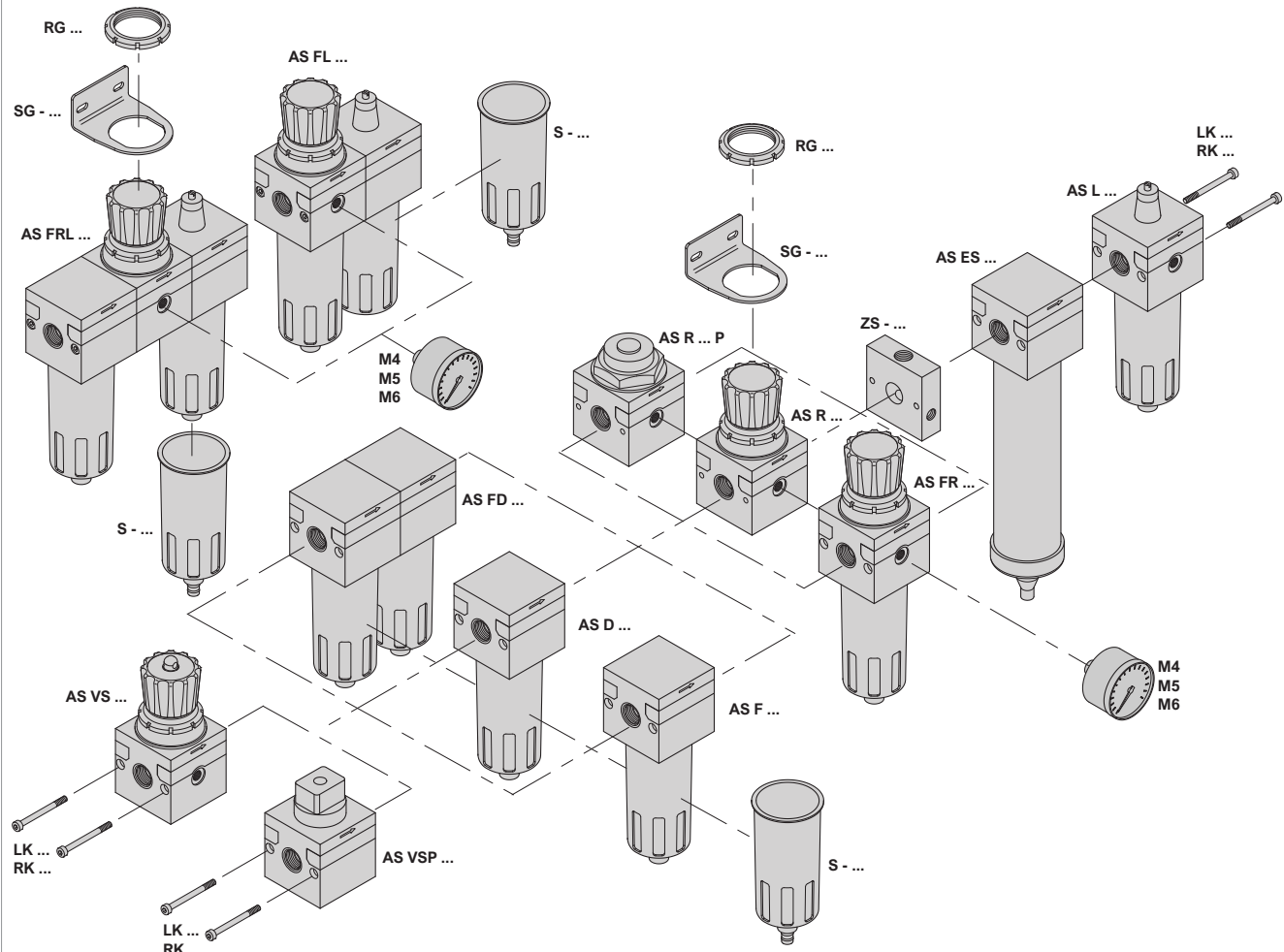
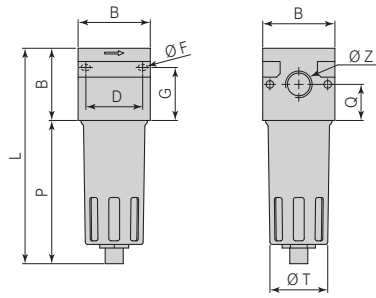


**AS SERIES ACCESSORIES**



	DEPURATOR	FILTER + DEPURATOR	DRYER	PILOT CONTROLLED REGULATOR Pneumatically	SHUT OFF VALVE Manual	SHUT OFF VALVE Pneumatics	RING NUT For AS FL ... - AS FRL ... AS FR ... - AS R ...		
<b>Size</b>	Page 4.2.05.7	Page 4.2.05.7	Page 4.2.05.7	Page 4.2.05.8	Page 4.2.05.8	Page 4.2.05.8	Page 4.2.05.8		
Gas 1/4"	AS D 4	AS FD 4	-	-	-	-	RG 4		
Gas 1/2"	AS D 2	AS FD 2	AS ES 2	AS R 2 P	AS VS 2	AS VSP 2	RG 2		
Gas 1"	-	-	-	-	-	-	RG 1		
	Painted zinc alloy and aluminium body and bowl	Painted zinc alloy and aluminium body and bowl	Painted zinc alloy and aluminium body	Painted zinc alloy and aluminium body	Painted zinc alloy and aluminium body Technopolymer control	Painted zinc alloy and aluminium body Aluminium control	Black technopolymer		
	FASTENING BRACKET For AS FL ... - AS FRL ... AS FR ... - AS R ...	DEVIATION INSERT For pneumatic signal sampling of the air treatment unit	ASSEMBLY KIT For AS FL	ASSEMBLY KIT For AS FRL	CONDENSATE DRAIN AUTOMATIC For filter regulator and filter	PRESSURE GAUGE			
<b>Size</b>	Page 4.2.05.9	Page 4.2.05.9			Page 4.2.05.9	Page 4.2.05.9			
Gas 1/4"	SG-4	ZS-4	LK 4	RK 4	S-4	M4	M5	-	
Gas 1/2"	SG-2	ZS-2	LK 2	RK 2	S-2	M4	M5	-	
Gas 1"	-	ZS-1	LK 1	RK 1	S-1	-	-	M6	
	Galvanised steel	Anodised aluminium	Zinc-plated steel screws NBR gaskets	Zinc-plated steel screws NBR gaskets	Brass body NBR gasket	Plastic dial Brass threaded connection			

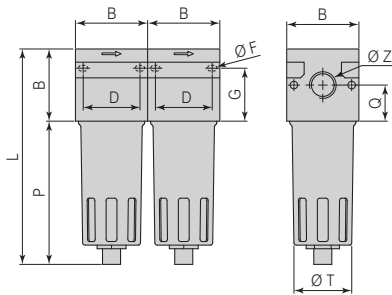
**AS SERIES ACCESSORIES**
**DEPURATOR**

**Technical characteristics**

<b>Code</b>	AS D 4	AS D 2
<b>Connections</b>	Gas 1/4"	Gas 1/2"
<b>Purification level</b>	99.97% at 0.01 µm	
<b>Maximum inlet pressure</b>	18 bar (10 bar with automatic condensate drain)	
<b>Operating temperature</b>	-25°C ÷ +50°C	
<b>Weight</b>	0.4 kg	0.9 kg

**Dimensions**

Size - Ø Z	Code	B	D	Ø F	G	L	P	Q	Ø T
Gas 1/4"	AS D 4	42	32	5.5	31	141	99	21	37
Gas 1/2"	AS D 2	60	46	5.5	44	185	125	30	51

AS D ... / Painted zinc alloy and aluminium body and bowl - 1 piece per pack

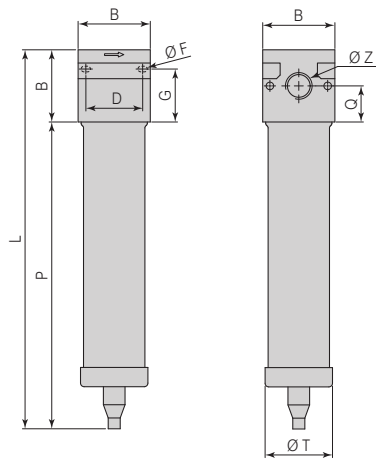
**FILTER + DEPURATOR**

**Technical characteristics**

<b>Code</b>	AS FD 4	AS FD 2
<b>Connections</b>	Gas 1/4"	Gas 1/2"
<b>Filtration degree</b>	4 µm	
<b>Purification level</b>	99.97% at 0.01 µm	
<b>Maximum inlet pressure</b>	18 bar (10 bar with automatic condensate drain)	
<b>Operating temperature</b>	-25°C ÷ +50°C	
<b>Weight</b>	0.8 kg	1.8 kg

**Dimensions**

Size - Ø Z	Code	B	D	Ø F	G	L	P	Q	Ø T
Gas 1/4"	AS FD 4	42	32	5.5	31	141	99	21	37
Gas 1/2"	AS FD 2	60	46	5.5	44	185	125	30	51

AS FD ... / Painted zinc alloy and aluminium body and bowl - 1 piece per pack

**DRYER**

**Technical characteristics**

<b>Code</b>	AS ES 2
<b>Connections</b>	Gas 1/2"
<b>Maximum inlet pressure</b>	10 bar
<b>Operating temperature</b>	0°C ÷ +50°C
<b>Weight</b>	0.9 kg

**Dimensions**

Size - Ø Z	Code	B	D	Ø F	G	L	P	Q	Ø T
Gas 1/2"	AS ES 2	60	46	5.5	44	285	225	30	56

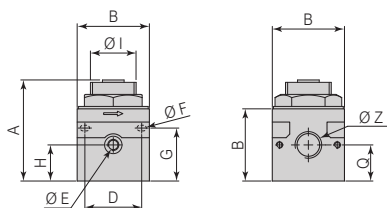
AS ES ... / Painted zinc alloy and aluminium body and bowl - 1 piece per pack



**AS SERIES ACCESSORIES**

**PILOT CONTROLLED REGULATOR**

Pneumatic operation



**Technical characteristics**

<b>Code</b>	AS R 2 P
<b>Connections</b>	Gas 1/2"
<b>Air flow rate</b>	4500 NI/min (at 6 bar)
<b>Maximum inlet pressure</b>	18 bar
<b>Operating temperature</b>	0°C ÷ +50°C
<b>Weight</b>	0.8 kg

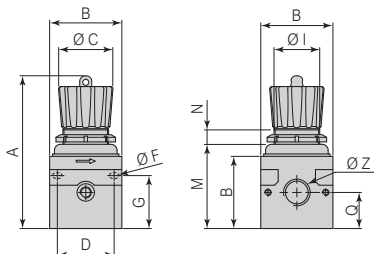
**Dimensions**

Size - Ø Z	Code	A	B	D	Ø E	Ø F
Gas 1/2"	AS R 2 P	84	60	46	Gas 1/8"	5.5
		<b>G</b>	<b>H</b>	<b>Ø I</b>	<b>Q</b>	
		44	30	M38x2	30	

AS R ... P / Body in painted zinc alloy and aluminium - 1 piece per pack

**SHUT-OFF VALVE**

Manual operation



**Technical characteristics**

<b>Code</b>	AS VS 2
<b>Connections</b>	Gas 1/2"
<b>Air flow rate</b>	3000 NI/min (at 6 bar)
<b>Maximum inlet pressure</b>	18 bar
<b>Operating temperature</b>	0°C ÷ +50°C
<b>Weight</b>	0.8 kg

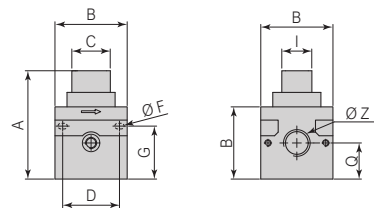
**Dimensions**

Size - Ø Z	Code	A	B	D	Ø F	G
Gas 1/2"	AS VS 2	127	60	46	5.5	44
		<b>Ø I</b>	<b>M</b>	<b>N</b>	<b>Q</b>	
		M38x2	70	12	30	

AS VS ... / Body in painted zinc and aluminium alloy, control in technopolymers - 1 piece per pack

**SHUT-OFF VALVE**

Pneumatic operation



**Technical characteristics**

<b>Code</b>	AS VS 2 P
<b>Connections</b>	Gas 1/2"
<b>Air flow rate</b>	3000 NI/min (at 6 bar)
<b>Maximum inlet pressure</b>	18 bar
<b>Operating temperature</b>	0°C ÷ +50°C
<b>Weight</b>	0.8 kg

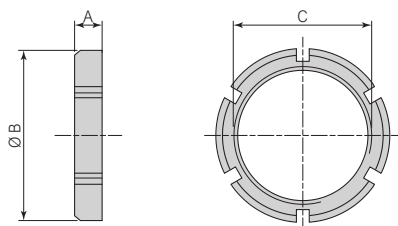
**Dimensions**

Size - Ø Z	Code	A	B	C	D
Gas 1/2"	AS VS 2 P	90	60	32	46
		<b>Ø F</b>	<b>G</b>	<b>I</b>	<b>Q</b>
		5.5	44	25	30

AS VS ... P/ Body in painted zinc and aluminium alloy, control in aluminium - 1 piece per pack

**REGULATOR RING NUT**

For: AS FL - AS FRL - AS FR - AS R

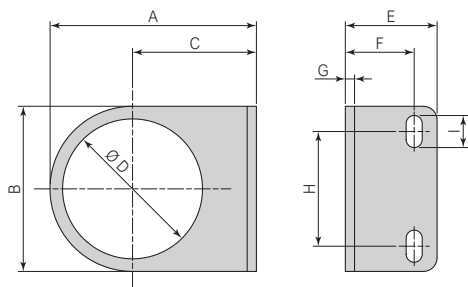


Size	Code	A	Ø B	C
Gas 1/4"	RG 4	6	40	M30x1.5
Gas 1/2"	RG 2	6	50	M38x2.0
Gas 1"	RG 1	7.5	70	M55x2.0

Black technopolymer ring nut / 1 piece per pack

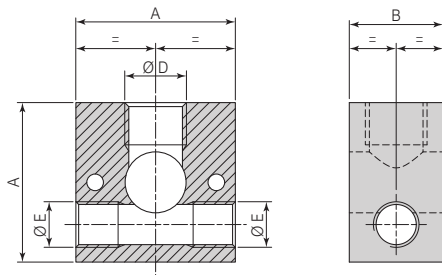
**AS SERIES ACCESSORIES**
**FASTENING BRACKET**

For: AS FL - AS FRL - AS FR - AS R



Size	Code	A	B	C	Ø D	E	F	G	H	I
Gas 1/4"	SG-4	56	49	32	30.5	28	13	2	20	12
Gas 1/2"	SG-2	68	60	42	40.5	30	15	2	40	12

Galvanised steel bracket / 1 piece per pack

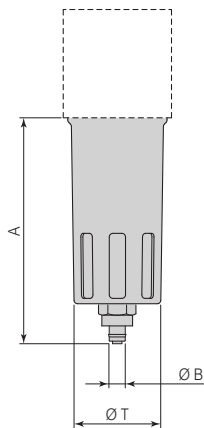
**DEVIATION INSERT**


Size	Code	A	B	Ø D	Ø E
Gas 1/4"	ZS-4	42	20	Gas 1/4"	Gas 1/8"
Gas 1/2"	ZS-2	60	25	Gas 1/4"	Gas 1/8"
Gas 1"	ZS-1	80	25	Gas 1/4"	Gas 1/4"

Anodised aluminium insert / 1 piece per pack

**CONDENSATE DRAIN**

Automatic

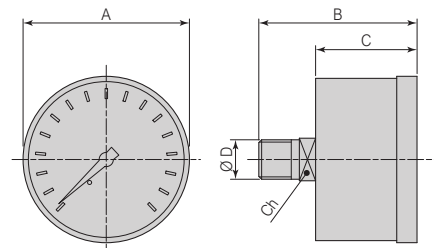


Size	Code	A	Ø B	Ø T
Gas 1/4"	S-4	106	8	37
Gas 1/2"	S-2	132	8	51
Gas 1"	S-1	162	8	76

Zinc alloy and painted aluminium bowl, brass drainage, NBR gasket / 1 piece per pack

**PRESSURE GAUGES**

Ø 40 - Ø 50 - Ø 63



Size	Code	Scale	A	B	C	Ø D	Ch
Gas 1/4"	M 4 04	0 ÷ 4	40	37	24.5	Gas 1/8"	12
	M 4 06	0 ÷ 6					
	M 4 10	0 ÷ 10					
Gas 1/2"	M 4 12	0 ÷ 12	50	46	27.5	Gas 1/8"	14
	M 5 04	0 ÷ 4					
	M 5 10	0 ÷ 10					
Gas 1"	M 5 12	0 ÷ 12	63	46	27.5	Gas 1/4"	14
	M 6 04	0 ÷ 4					
	M 6 06	0 ÷ 6					
	M 6 10	0 ÷ 10					
	M 6 12	0 ÷ 12					

Black plastic body - clear, threaded connection / 1 piece per pack