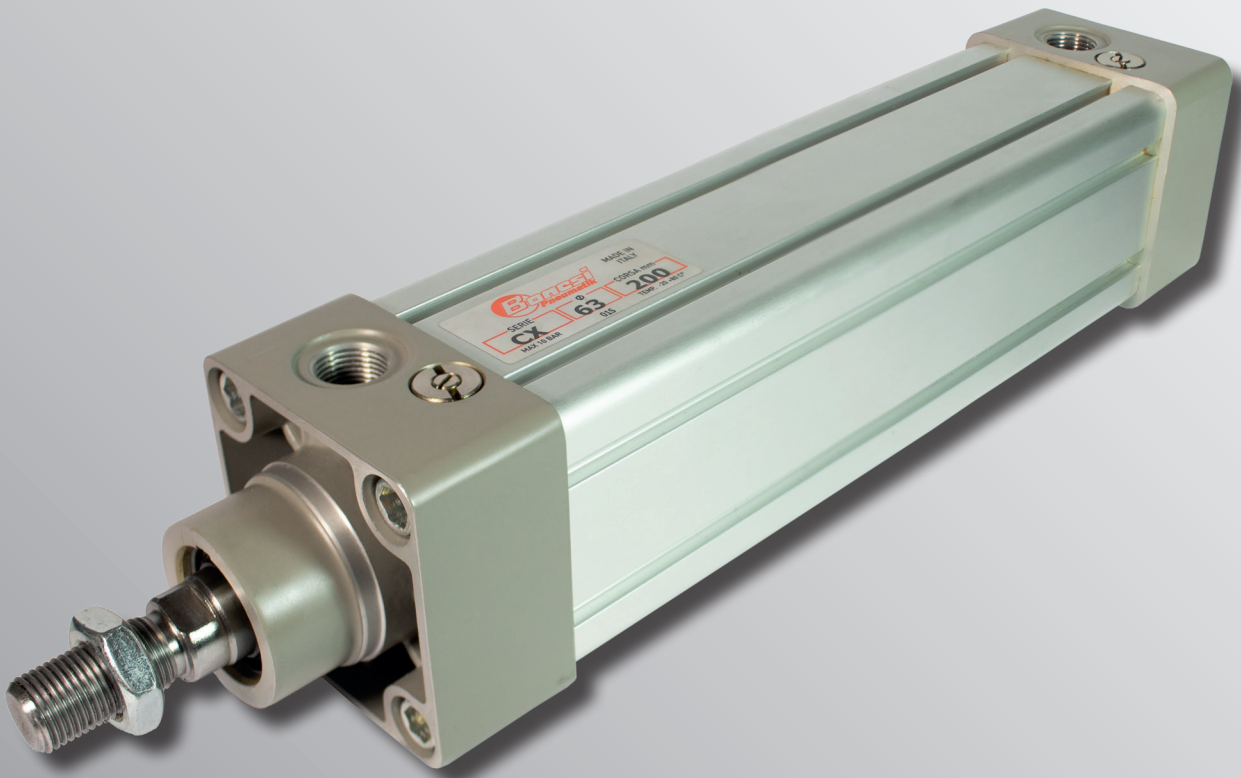


CX Series

According to ISO 15552 standards



ISO 9001
BUREAU VERITAS
Certification

N° IT275286





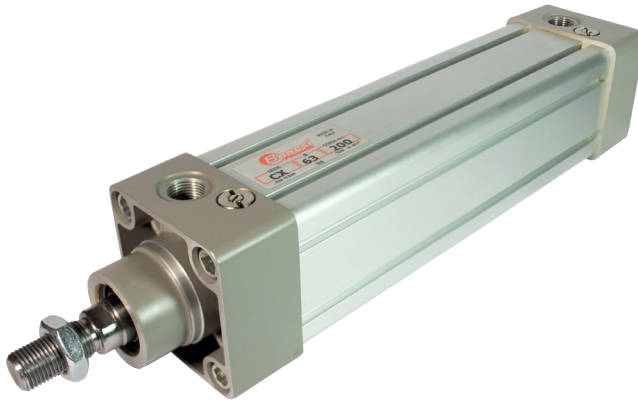
Cylinders according to ISO 15552 standards - Series CX

Bores Ø : 32 - 40 - 50 - 63 - 80 - 100 - 125 mm.

1

PNEUMATIC ACTUATORS

SERIES CX



Robust cylinders for heavy duty application

According to ISO 15552 standards

Caps in die-cast aluminium, epoxy painted

Piston rod in steel C45, grounded and hard chromium plated

Profiled tube in anodized aluminium, internally gauged

"T" grooves for sensors, on one side

Adjustable end of stroke pneumatic cushions

Complete piston in NBR vulcanized Aluminium piston with NBR seals

Sensors and mounting accessories

TECHNICAL FEATURES

Construction	Caps fixed on profiled tube by bolts
Function	Double acting, single acting on request
Standard materials	Caps in die-cast aluminium epoxy painted, piston rod in steel C45 grounded and hard chromium plated. Profiled tube in anodized aluminium internally gauged, complete piston/aluminium piston. Seals in NBR - PU
Note about the materials	According to Directive REACH (1907/2006/CE and s.a.s.)
Bores	Ø 32, 40, 50, 63, 80, 100, 125 mm
Standard strokes (min. - max.)	Ø 32: 25 mm ÷ 400 mm Ø 40, 50: 25 mm ÷ 400 mm Ø 63, 80: 25 mm ÷ 600 mm Ø 100, 125: 50 mm ÷ 1000 mm
Special strokes (on request)	Up to 3000 mm
Working temperature	0 ÷ 80°C (standard seals, -20°C with dry air, in order to avoid formation of ice) 0 ÷ 150°C (option in FKM, -20°C with dry air, in order to avoid formation of ice)
Working pressure	0,5 ÷ 10 bar
Fluid	Filtered air without lubrication, according to ISO 8573-1:2010 [7:4:4]
Speed	10 ÷ 1000 mm/sec

CERTIFICAZIONE ATEX

Cylinder marking	CE Ex II 2G Ex h IIC T6 Gb CE Ex II 2D Ex h IIIC 85°C Db	(Zona 1 e Zona 2) (Zona 21 e Zona 22)
Operating pressure in ATEX environment	0,5 ÷ 10 bar	
Temperature in ATEX environment	-20°C ≤ Ta ≤ +60°C	
CE marking	According to Directive 2014/34/EU (see declaration of conformity)	

TECHNICAL FEATURES

Bore Ø (mm)	32	40	50	63	80	100	125
Ports (gas)	1/8"	1/4"	1/4"	3/8"	3/8"	1/2"	1/2"
Piston rod Ø (mm)	12	16	20	20	25	25	32
Thread of the piston rod (male)	M10 x 1,25	M12 x 1,25	M16 x 1,5	M16 x 1,5	M20 x 1,5	M20 x 1,5	M27 x 2
Theoretical push thrust at 6 bar (N)	482	754	1178	1870	3016	4710	7363
Theoretical pull thrust at 6 bar (N)	414	633	990	1680	2722	4416	6882
Air consumption at 6 bar in push (Nl/cm)	0,056	0,088	0,137	0,218	0,350	0,550	0,860
Air consumption at 6 bar in pull (Nl/cm)	0,048	0,074	0,114	0,195	0,320	0,510	0,790
Cushioning stroke (mm)	18	23	27	33	33	33	33

1.3.15.1

ORDERING CODE

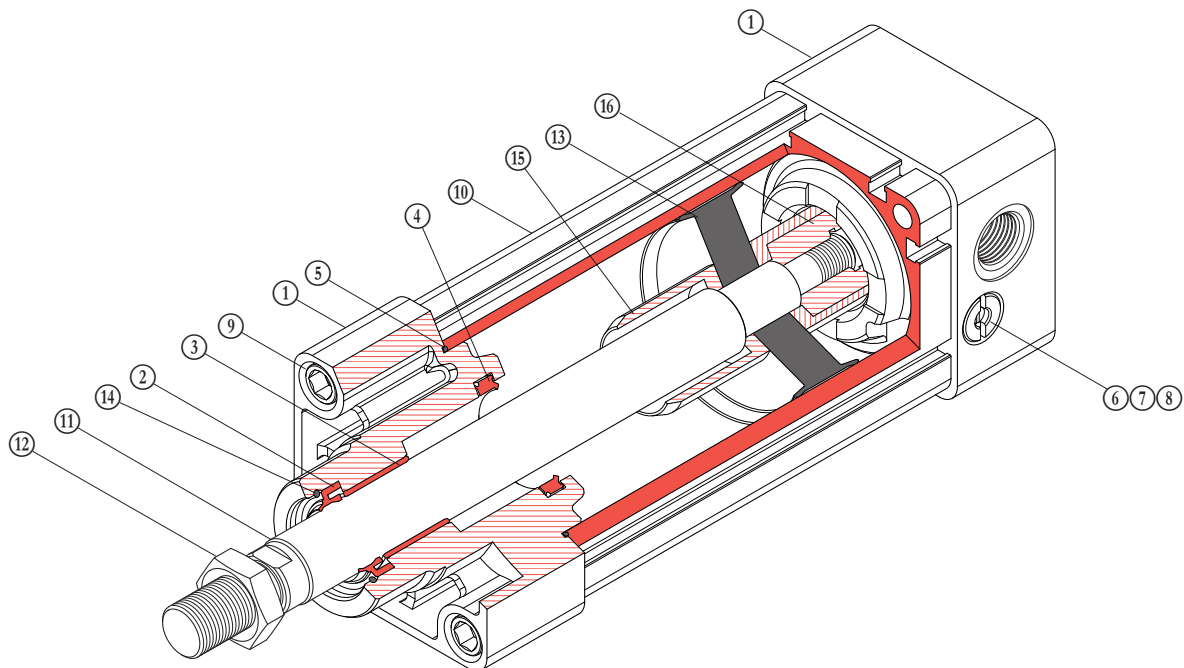
Series	Magnetic ring	Piston rod options	Bore	Piston rod stroke	Manufacturing variants	According to directive 2014/34/EU - ATEX
CX	<input type="checkbox"/>	<input type="checkbox"/>	032	100	<input type="checkbox"/>	<input type="checkbox"/>
M = With magnetic ring = Without magnetic ring		P = Double ended = Standard rod	032 = Ø 32 mm 040 = Ø 40 mm 050 = Ø 50 mm 063 = Ø 63 mm 080 = Ø 80 mm 100 = Ø 100 mm 125 = Ø 125 mm	See table "standard strokes" Other strokes available on request	EX = According to 2014/34/EU = Without certifications	
CX = Double acting, standard rod, not magnetic, end of stroke adjustable cushioning.						
MA = Extended piston rod for standard locking unit MB = Extended piston rod for compact locking unit NX = Piston rod and nut in AISI 304 (X5 Cr Ni 1810) HR = Piston rod, tie rods and nuts in AISI 304 (X5 Cr Ni 1810) - Epoxy paint FKM = Seals for high temperatures (-20°C ÷ 150°C) FKMS = Rod seal in FKM, others as standard T = Round tube and tie rods, other as standard AR = Low friction version MT4 = Intermediate hinge = No variants to the standard						

STANDARD STROKES

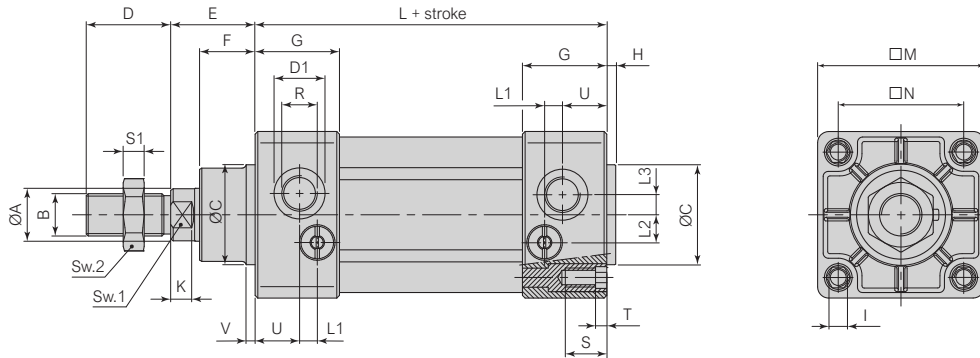
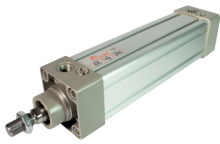
Ø	25	50	75	80	100	125	150	160	200	250	300	350	400	500	600	700	800	1000
32	x	x	x	x	x	x	x	x	x	x	x	x	x					
40	x	x	x	x	x	x	x	x	x	x	x	x	x					
50	x	x	x	x	x	x	x	x	x	x	x	x	x					
63	x	x	x	x	x	x	x	x	x	x	x	x	x	x	x			
80	x	x	x	x	x	x	x	x	x	x	x	x	x	x	x			
100		x	x	x	x	x	x	x	x	x	x	x	x	x	x	x	x	x
125		x	x	x	x	x	x	x	x	x	x	x	x	x	x	x	x	x

STANDARD MATERIALS

POS	DESCRIPTION	MATERIAL	POS	DESCRIPTION	MATERIAL
①	Caps	Die-cast aluminium epoxy paint	⑨	Bolt for fixing cap	Zinc-plated steel
②	Piston rod seal	Nitril rubber (NBR)	⑩	Profiled tube	Extruded aluminum EN AW-6060 T6
③	Guide bushing	Steel + PTFE	⑪	Rod	Chromed steel C45, 20 µm
④	Cushion seal	Nitril rubber (NBR/PU)	⑫	Rod nut	Zinc-plated steel
⑤	Cap seal	Nitril rubber (NBR)	⑬	Piston	Nitril rubber (NBR) / Aluminium
⑥	Cushion screw	Nickel-plated brass	⑭	Retaining ring	Spring steel
⑦	Retaining ring	Nickel-plated brass	⑮	Cushioning shank	Acetal resin
⑧	Cushion screw seal	Nitril rubber (NBR)	⑯	Piston nut - rod	Aluminum

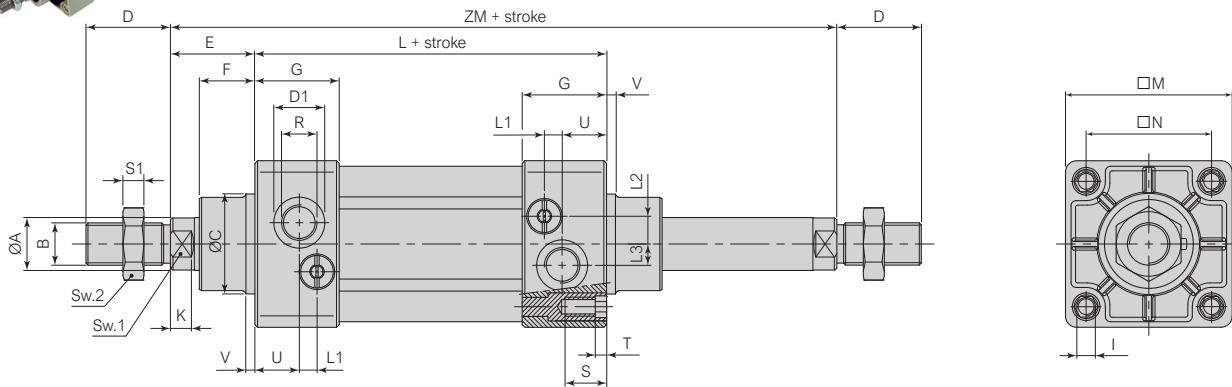


CX... / CXM...



Bore mm	Ø A f7	B	Ø C d11	D	D1	E	F	G	H	I	K	L+	L1	L2	L3	M	N	R		S	S1		SW1 SW2		T	U	V	
																		Min	Ch		Ch	Ch						
32	12	M10 x 1,25	30	22	15	26	16	33	3	M6	6	94	±0,4	11	4,5	5	47	32,5	Gas 1/8"	16	5	10	17	4	14	4		
40	16	M12 x 1,25	35	24	19	30	±1,4	20	33,5	3,5	M6	6,5	105	±0,7	10	7	6	52	38	±0,5	Gas 1/4"	16	6	13	19	4	15	4
50	20	M16 x 1,5	40	32	19	37	±1,4	25	34	3,5	M8	8	106	±0,7	10	7	6	65	46,5	±0,6	Gas 1/4"	16	8	17	24	5	15	4
63	20	M16 x 1,5	45	32	23	37	±1,4	25	38	4	M8	8	121	±0,8	8	12,5	9,5	75	56,5	±0,6	Gas 3/8"	16	8	17	24	5	20	4
80	25	M20 x 1,5	45	40	23	46	±1,8	30	41,5	4	M10	10	128	±0,8	8	13,5	9,5	95	72	±0,7	Gas 3/8"	17	10	22	30	6	20	4
100	25	M20 x 1,5	55	40	27	51	±1,8	35	41,5	4	M10	10	138	±1,1	6	17	12	115	89	±1,1	Gas 1/2"	17	10	22	30	6	25	4
125	32	M27 x 2	60	54	27	65	±2,2	40	45	4	M12	13	160	±1,1	3	17	12	140	110	±1,1	Gas 1/2"	20	13,5	27	41	7	30	6

CXP... / CXMP...



Bore mm	Ø A f7	B	Ø C d11	D	D1	E	F	G	I	K	L+	L1	L2	L3	M	N	R		S	S1		SW1 SW2		T	U	V	ZM+	
																	Min	Ch		Ch	Ch							
32	12	M10 x 1,25	30	22	15	26	16	33	M6	5	94	±0,4	11	4,5	5	47	32,5	Gas 1/8"	16	5	10	17	4	14	4	146		
40	16	M12 x 1,25	35	24	19	30	±1,4	20	33,5	M6	5	105	±0,7	10	7	6	52	38	±0,5	Gas 1/4"	16	6	13	19	4	15	4	165
50	20	M16 x 1,5	40	32	19	37	±1,4	25	34	M8	5,5	106	±0,7	10	7	6	65	46,5	±0,6	Gas 1/4"	16	8	17	24	5	15	4	180
63	20	M16 x 1,5	45	32	23	37	±1,4	25	38	M8	5,5	121	±0,8	8	12,5	9,5	75	56,5	±0,6	Gas 3/8"	16	8	17	24	5	20	4	195
80	25	M20 x 1,5	45	40	23	46	±1,8	30	41,5	M10	7	128	±0,8	8	13,5	9,5	95	72	±0,7	Gas 3/8"	17	10	22	30	6	20	4	220
100	25	M20 x 1,5	55	40	27	51	±1,8	35	41,5	M10	7	138	±1,1	6	17	12	115	89	±1,1	Gas 1/2"	17	10	22	30	6	25	4	240
125	32	M27 x 2	60	54	27	65	±2,2	40	45	M12	8	160	±1,1	3	17	12	140	110	±1,1	Gas 1/2"	20	13,5	27	41	7	30	6	290

ACCESSORI								
CD 2910 ...	CD SEC ...	CD SECH ...	CX HGSB ...	CX HGBB ...	CX UGSB ...	CX RL ... A	CX RL ... B	
Support for intermediate hinge (AT4)	Pin for female hinge MP2 (AA4)	Pin for female hinge MP6 (AA6)	Piston rod guide H shape with slide bearings support	Piston rod guide H shape with ball bearings support	Piston rod guide U shape with slide bearings support	Static locking unit	Static locking unit	
Ø Page 1.3.15.9	Page 1.3.15.10	Page 1.3.15.10	Page 1.3.15.11	Page 1.3.15.11	Page 1.3.15.12	Page 1.3.15.13	Page 1.3.15.13	
32 CD 2910 32	CD SEC 32	CD SECH 32	CX HGSB 32	CX HGBB 32	CX UGSB 32	CX RL 032 A	CX RL 032 B	
40 CD 2910 40	CD SEC 40	CD SECH 40	CX HGSB 40	CX HGBB 40	CX UGSB 40	CX RL 040 A	CX RL 040 B	
50 CD 2910 50	CD SEC 50	CD SECH 50	CX HGSB 50	CX HGBB 50	CX UGSB 50	CX RL 050 A	CX RL 050 B	
63 CD 2910 63	CD SEC 63	CD SECH 63	CX HGSB 63	CX HGBB 63	CX UGSB 63	CX RL 063 A	CX RL 063 B	
80 CD 2910 80	CD SEC 80	CD SECH 80	CX HGSB 80	CX HGBB 80	CX UGSB 80	CX RL 080 A	CX RL 080 B	
100 CD 2910 100	CD SEC 100	CD SECH 100	CX HGSB 100	CX HGBB 100	CX UGSB 100	CX RL 100 A	CX RL 100 B	
125 CD 2910 125	CD SEC 125	CD SECH 125	-	-	-	CX RL 125 A	CX RL 125 B	
White zinc coating steel Bush in sinterized bronze	White zinc coating steel	White zinc coating steel	Body: Anodised aluminium Rods: Chrome plated steel Bush: Sinterized bronze	Body: Anodised aluminium Rods: Chrome plated steel Bush: Spherical bearings	Body: Anodised aluminium Rods: Chrome plated steel Bush: Sinterized bronze	Body: Anodised aluminium Jaws: Brass Springs: Spring steel	Body: Anodised aluminium Jaws: Brass Springs: Spring steel	
CD SG ...	CD SGV ...	CD SGVS ...	CDM SG ...	CDM SGV ...				
Standard seals kit	High temperature seals kit	Seals kit, rod in FKM other as standard	Standard seals kit Magnetic	High temperature seals kit Magnetic				
Ø								
32 CD SG 32	CD SGV 32	CD SGVS 32	CDM SG 32	CDM SGV 32				
40 CD SG 40	CD SGV 40	CD SGVS 40	CDM SG 40	CDM SGV 40				
50 CD SG 50	CD SGV 50	CD SGVS 50	CDM SG 50	CDM SGV 50				
63 CD SG 63	CD SGV 63	CD SGVS 63	CDM SG 63	CDM SGV 63				
80 CD SG 80	CD SGV 80	CD SGVS 80	CDM SG 80	CDM SGV 80				
100 CD SG 100	CD SGV 100	CD SGVS 100	CDM SG 100	CDM SGV 100				
125 CD SG 125	CD SGV 125	CD SGVS 125	CDM SG 125	CDM SGV 125				
Rod seals: Polyurethane Other seals: NBR	Seals in FKM	Rod seals: FKM Other seals: NBR	Rod seals: Polyurethane Other seals: NBR	Seals in FKM				
SR ...	SK9 ...	SKC ...	SEX ...	SHT ...	Y082LC/Y083LC	ST- ...	CD SHT ...T	
NC sensors REED / HALL	IP69K sensor PNP	Precise position sensor PNP	ATEX II3G sensor PNP	High temperature sensor REED	Straight connectors	Bracket for sensor ST	Bracket for sensor SHT	
Ø Page 1.3.15.14	Page 1.3.15.15	Page 1.3.15.15	Page 1.3.15.15	Page 1.3.15.16	Page 1.3.15.16	Page 1.3.15.17	Page 1.3.15.17	
32						ST-10	CD SHT 32T	
40						ST-10	CD SHT 40T	
50						ST-10	CD SHT 50T	
63						ST-10	CD SHT 63T	
80						ST-11	CD SHT 80T	
100						ST-11	CD SHT 100T	
125						ST-11	CD SHT 125T	
Sensor: PA6 Cable: PUR	Sensor: PA12 Cable: PUR	Sensor: PA Cable: PUR	Sensor: PA Cable: PVC	Sensor: Aluminium Cable: PTFE	Connector: PVC Contacts: Gilded brass Cable: PVC	Bracket: Anodised aluminium Screw and plate: steel	Bracket: Anodised aluminium Screw and plate: steel	

PISTON ROD ACCESSORIES

CD FF ... Female clevis with pin	Bore mm	Code	AA	AB	∅ AC	AD	AE	AF	AG	AH	AL
	32	CD FF 32	10	$\begin{matrix} +0,37 \\ +0,15 \end{matrix}$ $\begin{matrix} +0,70 \\ +0,15 \end{matrix}$	M10 x 1,25	10	20	52	40	23	3
	40	CD FF 40	12		M12 x 1,25	12	24	62	48	28	4
	50	CD FF 50	16		M16 x 1,5	16	32	83	64	36	6
	63	CD FF 63	16		M16 x 1,5	16	32	83	64	36	6
	80	CD FF 80	20		M20 x 1,5	20	40	105	80	44	5
	100	CD FF 100	20		M20 x 1,5	20	40	105	80	44	5
	125	CD FF 125	30		M27 x 2	30	55	148	110	65	-

CD FF ... Clevis and clip in zinc plated steel / 1 piece each package

CD KJ ... Self-lubricating oscillating joint	Bore mm	Code	AB	∅ AC	AM	AN	AO	AP	AQ	∅ AR	∅ AS	∅ AT	AU	AV	AZ
	32	CD KJ 32	M10 x 1,25	10	20	17	28	14	10,5	12,9	15	19	6,5	43	57
	40	CD KJ 40	M12 x 1,25	12	22	19	32	16	12	15,4	17,5	22	6,5	50	66
	50	CD KJ 50	M16 x 1,5	16	28	22	42	21	15	19,3	22	27	8	64	85
	63	CD KJ 63	M16 x 1,5	16	28	22	42	21	15	19,3	22	27	8	64	85
	80	CD KJ 80	M20 x 1,5	20	33	30	50	25	18	24,3	27,5	34	10	77	102
	100	CD KJ 100	M20 x 1,5	20	33	30	50	25	18	24,3	27,5	34	10	77	102
	125	CD KJ 125	M27 x 2	30	51	41	70	37	25	34,8	40	50	15	110	145

CD KJ ... Joint in zinc plated steel, bush in sintered bronze, ring in hardened bearing steel / 1 piece each package

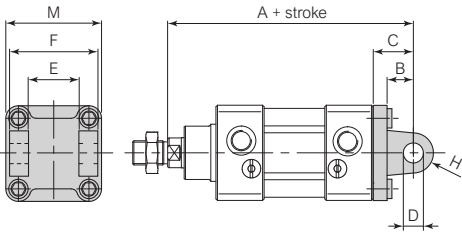
CD KK ... Self-aligning joint angular and radial	Bore mm	Code	A	B	C	D	E	∅ F	∅ G	∅ H	L	M	Ch1	Ch2	Ch3	°β	Static load daN
	32	CD KK 32	M10 x 1,25	71,5	20	7,5	35	14	22	32	2	22	12	19	30	8	500
	40	CD KK 40	M12 x 1,25	75,5	24	7,5	35	14	22	32	2	22	12	19	30	8	500
	50	CD KK 50	M16 x 1,5	104	32	10	53	22	32	45	2	30	20	27	41	6	1000
	63	CD KK 63	M16 x 1,5	104	32	10	53	22	32	45	2	30	20	27	41	6	1000
	80	CD KK 80	M20 x 1,5	119	40	10	53	22	32	45	2	37	20	27	41	6	1000
	100	CD KK 100	M20 x 1,5	119	40	10	53	22	32	45	2	37	20	27	41	6	1000
	125	CD KK 125	M27 x 2	147	54	10	60	32	57	70	2	48	24	54	65	8	3000

CD KK ... Joint and nut in zinc plated steel, pin in burnished steel / 1 piece each package

MOUNTING ACCESSORIES

CD 2801 ... / CD 2901 ...

Female hinge (MP2)

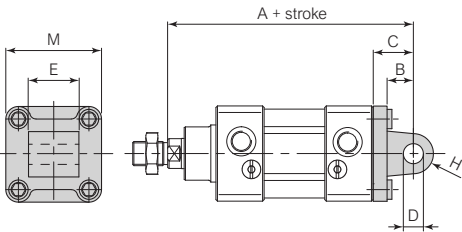


Bore mm	Code	A+	B	C	D	E	F	M	H	Fixing screw ISO 4762
32	CD 2801 32 CD 2901 32	142	13	22	10	26	45	45	10	M6 x 18
40	CD 2801 40 CD 2901 40	160	16	25	12	28	52	52	12	M6 x 18
50	CD 2801 50 CD 2901 50	170	16	27	12	32	60	65	12	M8 x 25
63	CD 2801 63 CD 2901 63	190	21	32	16	40	70	75	16	M8 x 25
80	CD 2801 80 CD 2901 80	210	22	36	16	50	90	95	16	M10 x 30
100	CD 2801 100 CD 2901 100	230	27	41	20	60	110	115	20	M10 x 30
125	CD 2801 125 CD 2901 125	275	30	50	25	70	130	140	25	M12 x 35

CD 2801 ... Light alloy / CD 2901 ... Painted steel black cataphoresis / 1 piece each package + 4 screws for fixing to cylinder

CD 2802 ... / CD 2902 ...

Male hinge (MP4)

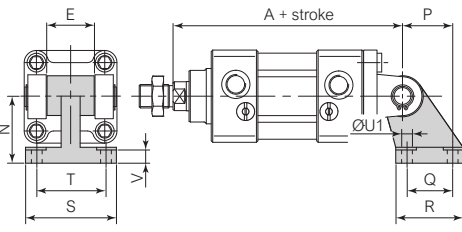


Bore mm	Code	A+	B	C	D	E	M	H	Fixing screw ISO 4762
32	CD 2802 32 CD 2902 32	142	13	22	10	26	45	10	M6 x 18
40	CD 2802 40 CD 2902 40	160	16	25	12	28	52	12	M6 x 18
50	CD 2802 50 CD 2902 50	170	16	27	12	32	65	12	M8 x 25
63	CD 2802 63 CD 2902 63	190	21	32	16	40	75	16	M8 x 25
80	CD 2802 80 CD 2902 80	210	22	36	16	50	95	16	M10 x 30
100	CD 2802 100 CD 2902 100	230	27	41	20	60	115	20	M10 x 30
125	CD 2802 125 CD 2902 125	275	30	50	25	70	140	25	M12 x 35

CD 2802 ... Light alloy / CD 2902 ... Painted steel black cataphoresis / 1 piece each package + 4 screws for fixing to cylinder

CD 2803 ... / CD 2903 ...

Square joint at 90° (AB7)

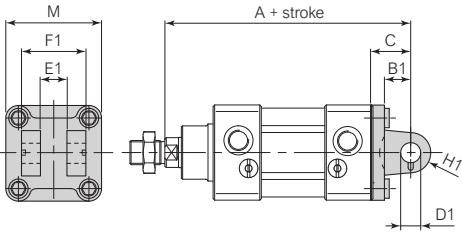


Bore mm	Code	A+	E	N	P	Q	R	S	T	ØU1	V
32	CD 2803 32 CD 2903 32	142	26	32	21	18	31	51	38	6,6	6,4
40	CD 2803 40 CD 2903 40	160	28	36	24	22	35	54	41	6,6	8,4
50	CD 2803 50 CD 2903 50	170	32	45	33	30	45	65	50	9	10,4
63	CD 2803 63 CD 2903 63	190	40	50	37	35	50	67	52	9	12,4
80	CD 2803 80 CD 2903 80	210	50	63	47	40	60	86	66	11	11,5
100	CD 2803 100 CD 2903 100	230	60	71	55	50	70	96	76	11	14,5
125	CD 2803 125 CD 2903 125	275	70	90	70	60	90	124	94	14	16,8

CD 2803 ... Light alloy / CD 2903 ... Painted steel black cataphoresis / 1 piece each package

CD 2804 ... / CD 2904 ...

Narrow female hinge (AB6)



Bore mm	Code	A+	B1	C	D1	E1	F1	H1	M	Fixing screw ISO 4762
32	CD 2804 32 CD 2904 32	142	13	22	10	14	34	10	45	M6 x 18
40	CD 2804 40 CD 2904 40	160	16	25	12	16	40	12	52	M6 x 18
50	CD 2804 50 CD 2904 50	170	16	27	16	21	45	14	65	M8 x 20
63	CD 2804 63 CD 2904 63	190	21	32	16	21	51	18	75	M8 x 20
80	CD 2804 80 CD 2904 80	210	22	36	20	25	65	20	95	M10 x 25
100	CD 2804 100 CD 2904 100	230	27	41	20	25	75	22	115	M10 x 25
125	CD 2804 125 CD 2904 125	275	30	50	30	37	97	25	140	M12 x 35

CS 2804 ... Light alloy / CS 2904 ... Painted steel black cataphoresis / 1 piece each package + 4 screws for fixing to cylinder

MOUNTING ACCESSORIES

CD 2805 ... / CD 2905 ... Narrow male hinge with articulated head (MP6)		Bore mm	Code	A+	B1	C	D1	E1	M	H2	Fixing screw ISO 4762
	32	CD 2805 32 CD 2905 32	142	±1,25	13	22	10	14	45	16	M6 x 18
	40	CD 2805 40 CD 2905 40	160		16	25	12	16	52	19	M6 x 18
	50	CD 2805 50 CD 2905 50	170		16	27	16	21	65	21	M8 x 20
	63	CD 2805 63 CD 2905 63	190	±1,6	21	32	16	21	75	24	M8 x 20
	80	CD 2805 80 CD 2905 80	210		22	36	20	25	95	28,5	M10 x 25
	100	CD 2805 100 CD 2905 100	230		27	41	20	25	115	30	M10 x 25
	125	CD 2805 125 CD 2905 125	275		±2	30	50	30	37	140	40

CD 2805 ... Light alloy / CD 2905 ... Painted steel black cataphoresis / 1 piece each package + 4 screws for fixing to cylinder

CD 2806 ... / CD 2906 ... Square joint at 90° with articulated head		Bore mm	Code	A+	E1	N	P	Q	R	S	T	ØU	V
	32	CD 2806 32 CD 2906 32	142	±1,25	14	32	21	18	31	51	38	6,6	8,5
	40	CD 2806 40 CD 2906 40	160		16	36	24	22	35	54	41	6,6	8,5
	50	CD 2806 50 CD 2906 50	170		21	45	33	30	45	65	50	9	10,5
	63	CD 2806 63 CD 2906 63	190	±1,6	21	50	37	35	50	67	52	9	10,5
	80	CD 2806 80 CD 2906 80	210		25	63	47	40	60	86	66	11	11,5
	100	CD 2806 100 CD 2906 100	230		25	71	55	50	70	96	76	11	12,5
	125	CD 2806 125 CD 2906 125	275		±2	37	90	70	60	90	124	94	13,5

CD 2806 ... Light alloy / CD 2906 ... Painted steel black cataphoresis / 1 piece each package

CD 2907 ... Front and rear flange ISO (MF1-MF2)		Bore mm	Code	A1+	B2	C1	D2	E2	F2	G	M	Fixing screw ISO 4762	
	32	CD 2907 32	130	±1,25	10	80	64	32	7	16	45	M6 x 18	
	40	CD 2907 40	145		10	90	72	36	9	20	±1,6	52	M6 x 18
	50	CD 2907 50	155		12	110	90	45	9	25	65	M8 x 20	
	63	CD 2907 63	170	±1,6	12	120	100	50	9	25	75	M8 x 20	
	80	CD 2907 80	190		16	150	126	63	12	30	±2	95	M10 x 20
	100	CD 2907 100	205		16	170	150	75	14	35	115	M10 x 20	
	125	CD 2907 125	245		±2	20	205	180	90	16	45	±2,5	140

CD 2907 ... White zinc plated steel / 1 piece each package + 4 screws for fixing to cylinder

CD 2908 ... Low foot pedestal (MS1)		Bore mm	Code	A2+	B3	C2	E2	ØG1	M	N	Q1+	V1	Fixing screw ISO 4762	
	32	CD 2908 32	144	±1,25	24	35	32	7	45	32	142	4	M6 x 18	
	40	CD 2908 40	163		28	36	36	9	52	36	161	±1,25	4	M6 x 18
	50	CD 2908 50	175		32	47	45	9	65	45	170	5	M8 x 20	
	63	CD 2908 63	190	±1,6	32	45	50	9	75	50	185	5	M8 x 20	
	80	CD 2908 80	215		41	55	63	12	95	63	210	±1,6	6	M10 x 25
	100	CD 2908 100	230		41	57	75	14	115	71	220	6	M10 x 25	
	125	CD 2908 125	270		±2	45	70	90	16	140	90	250	±2	8

CD 2908 ... White zinc plated steel / 1 piece each package + 2 screws for fixing to cylinder

MOUNTING ACCESSORIES

CD 2909 ... Not adjustable intermediate hinge (MT4) - Round tube and tie rods	Bore mm	Code	A3 h14	B4 h14	C3	Ø D3 e9	E3	Xmin	Xmax +
	32	CD 2909 32	50	12	46	12	15	67	79
	40	CD 2909 40	63	16	59	16	20	74	91
	50	CD 2909 50	75	16	69	16	20	81	95
	63	CD 2909 63	90	20	84	20	25	88	107
	80	CD 2909 80	110	20	102	20	25	100	120
	100	CD 2909 100	132	25	125	25	30	108	132
	125	CD 2909 125	160	25	155	25	32	126	164

CD 2909 ... White zinc plated steel / 1 piece each package

CD 2909 ...R Adjustable intermediate hinge (MT4) - Round tube and tie rods	Bore mm	Code	A3 h14	B4 h14	C3	Ø D3 e9	E3	Xmin	Xmax +
	32	CD 2909 32R	50	12	46	12	15	67	79
	40	CD 2909 40R	63	16	59	16	20	74	91
	50	CD 2909 50R	75	16	69	16	20	81	95
	63	CD 2909 63R	90	20	84	20	25	88	107
	80	CD 2909 80R	110	20	102	20	25	100	120
	100	CD 2909 100R	132	25	125	25	30	108	132
	125	CD 2909 125R	160	25	155	25	32	126	164

CD2909 ... R White zinc plated steel / 1 piece each package + 8 set head screws for fixing to cylinder

CD 2909 ...TQ Adjustable intermediate hinge (MT4) - Square tube	Bore mm	Code	A3 h14	B4 h14	C3	Ø D3 e9	E3	F3	Xmin	Xmax +
	32	CD 2909 32TQ	50	12	50	12	18	70	68	78
	40	CD 2909 40TQ	62	16	62	16	20	78	74	91
	50	CD 2909 50TQ	74	16	74	16	20	91	81	95
	63	CD 2909 63TQ	88	20	88	20	25	94	88	107
	80	CD 2909 80TQ	109	20	109	20	25	130	100	120
	100	CD 2909 100TQ	130	25	130	25	30	145	108	132
	125	CD 2909 125TQ	155	25	155	25	32	154	126	164

CD2909 ... TQ White zinc plated steel / 1 piece each package + 8 set head screws for fixing to cylinder

CD 2910 ... Support for intermediate hinge (AT4)	Bore mm	Code	A3 h14	A4	B5	C4	Ø D3 F7	E4 ±0,2	F3 ±0,5	Ø G2 H13	Ø G3 H13	M1	N1 ±0,1
	32	CD 2910 32	50	46	71	86	12	32	7	6,6	11	30	15
	40	CD 2910 40	63	55	87	105	16	36	9	9	15	36	18
	50	CD 2910 50	75	55	99	117	16	36	9	9	15	36	18
	63	CD 2910 63	90	65	116	136	20	42	11	11	18	40	20
	80	CD 2910 80	110	65	136	156	20	42	11	11	18	40	20
	100	CD 2910 100	132	75	164	189	25	50	13	14	20	50	25
	125	CD 2910 125	160	75	192	217	25	50	13	14	20	50	25

CD 2910 ... White zinc plated steel, bush in sintered bronze / 2 pieces each package

MOUNTING ACCESSORIES

CD SEC ... Pin for female hinge MP2 (AA4)	Bore mm	Code	Ø EK e8	EL $+0,3$ 0	L
	32	CD SEC 32	10	46	53
	40	CD SEC 40	12	53	60
	50	CD SEC 50	12	61	68
	63	CD SEC 63	16	71	78
	80	CD SEC 80	16	91	98
	100	CD SEC 100	20	111	118
	125	CD SEC 125	25	132	139

CD SEC ... White zinc plated steel / 1 piece each package + 2 retaining rings DIN 471

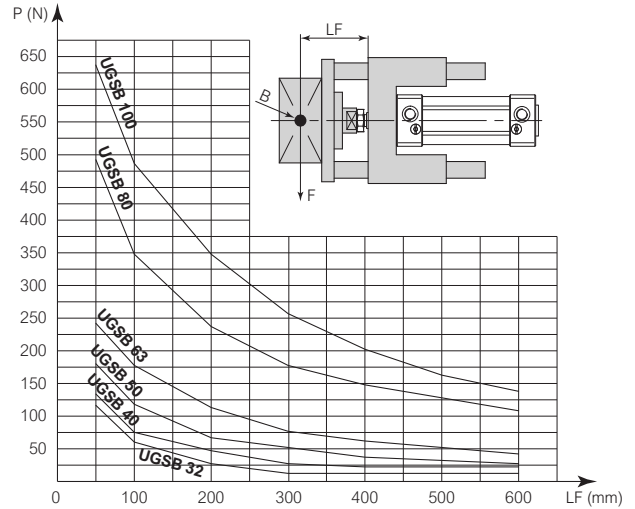
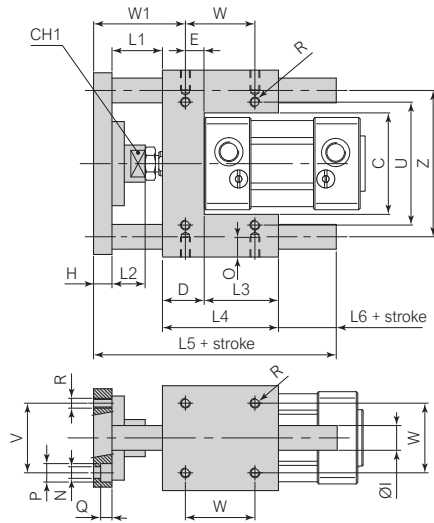
CD SECH ... Pin for female hinge MP6 (AA6)	Bore mm	Code	B	Ø EK f7	EL1 $+0,5$ $+0,3$	H 0 -0,5	L1	Ø P h12	
	32	CD SECH 32	4,5	10	32,5	14	41	3	
	40	CD SECH 40	6	0 -1	12	38	16	48	4
	50	CD SECH 50	6		16	43	20	54	4
	63	CD SECH 63	6		16	49	20	60	4
	80	CD SECH 80	6		20	63	24	75	4
	100	CD SECH 100	6		20	73	24	85	4
	125	CD SECH 125	9	0 -2	30	94	36	110	6

CD SECH ... White zinc plated steel / 1 piece each package + 1 retaining ring DIN 471

GUIDE UNITS

CX UGSB ...

Piston rod guide U shape with slide bearings support



Bore mm	Code	A	B	C	Ch1	D	E	E1	E2	F	G	H	ØI	L1	L2	L3	L4	L5+	L6+	N	O	P	Q	R	T	U	W	W1	Z
32	CX UGSB 032	97	49	51	15	17	9,25	9,25	32,5	93	45	12	12	42	25	11	48	120	18	6,6	12	11	6,5	M6	78	61	32,5	61,75	74
40	CX UGSB 040	115	58	58,2	15	21	11	11	38	112	55	12	16	43	25	37	58	130	17	6,6	12	11	6,5	M6	84	69	38	65	87
50	CX UGSB 050	137	70	70,2	20	25	18,8	18,8	46,5	134	65	15	20	49	29	34	59	143	20	9	16	15	8,5	M8	100	85	46,5	70,2	104
63	CX UGSB 063	152	85	85,2	20	25	15,3	15,3	56,5	147	80	15	20	49	29	51	76	161	21	9	16	15	9	M8	105	100	56,5	73,7	119
80	CX UGSB 080	189	105	105,5	26	34	25	14	50	180	100	20	25	53	27	56	90	193	30	11	20	18	11	M10	130	130	72	82	148
100	CX UGSB 100	213	130	130,5	26	39	28,5	19	70	206	120	20	25	54	27	71	110	214	30	11	20	18	11	M10	150	150	59	84,5	173

CC HGBB ... Body and plate in anodized aluminium, piston rods in chromium plated steel, joint in stainless steel, bushes in steel, seals in NBR / 1 piece each package + 4 screws for fixing to cylinder

ORDERING CODE

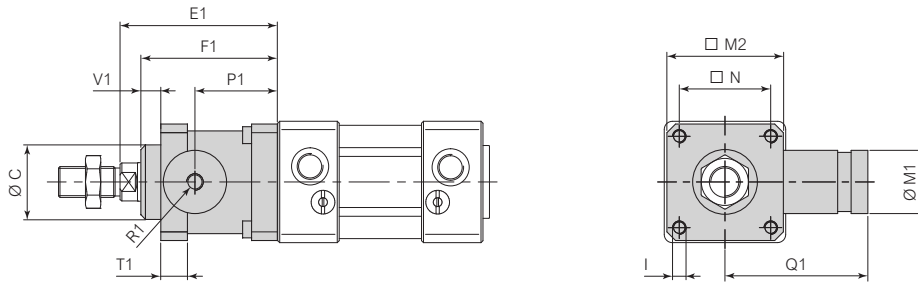
Series	Type	Bore	Standard strokes
CX	HGSB	32	100
	<p>HGSB = Piston rod guide "H" shape Bushes in sintered bronze For high load</p> <p>HGBB = Piston rod guide "H" shape Bushes in steel For high speed</p> <p>UGSB = Piston rod guide "U" shape Bushes in sintered bronze For low speed and load</p>	<p>32 = Ø 32 mm 40 = Ø 40 mm 50 = Ø 50 mm 63 = Ø 63 mm 80 = Ø 80 mm 100 = Ø 100 mm 125 = Ø 125 mm</p>	<p>025 = 25 mm 050 = 50 mm 075 = 75 mm 080 = 80 mm 100 = 100 mm 125 = 125 mm 150 = 150 mm 160 = 160 mm 200 = 200 mm 250 = 250 mm 300 = 300 mm 350 = 350 mm 400 = 400 mm 500 = 500 mm 600 = 600 mm 700 = 700 mm 800 = 800 mm 1000 = 1000 mm</p>

Corse speciali da concordare con ufficio commerciale

LOCKING UNIT

CX RL ... A

Static locking unit

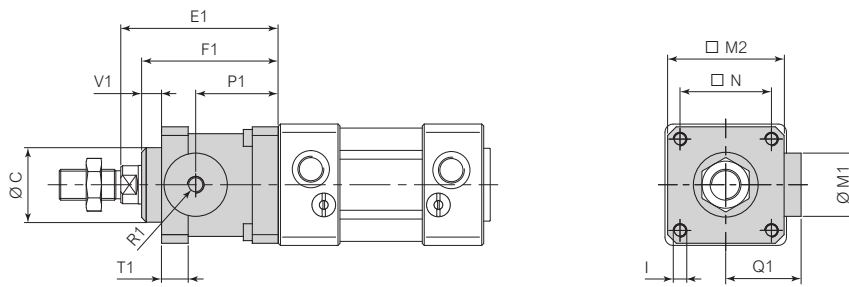


Bore mm	Code	Ø C d11	E1	F1 ±0,3	I	Ø M1 f8	M2	N	P1	Q1 ±0,15	R1	T1 ±0,3	V1	Fixing screw	Locking force N				
32	CX RL 032 A	30	74	±1,4	58	M6	20	45	±0,5	32,5	±0,25	31,5	±0,4	44,5	M5	13	10	M6 x 20	600
40	CX RL 040 A	35	85		65	M6	24	50	±0,55	38		36		61	Gas 1/8"	13	10	M6 x 20	1000
50	CX RL 050 A	40	107	±1,8	82	M8	30	60	±0,75	46,5	±0,3	45,5	±0,5	75	Gas 1/8"	16	12	M8 x 30	1400
63	CX RL 063 A	45	107		82	M8	38	70		±0,75	56,5	±0,4		49,5	85,5	Gas 1/8"	16	12	M8 x 30
80	CX RL 080 A	45	136	±2,2	110	M10	48	90	±1,0	72	±0,45	61	±0,5	85,5	Gas 1/8"	20	20	M10 x 35	3500
100	CX RL 100 A	55	143		115	M10	48	105	±1,1	89	±0,5	65		115	Gas 1/8"	20	23	M10 x 35	5000
125	CX RL 125 A	60	187	167	M12	65	140	±1,1		110	±0,6	86,5	140	Gas 1/8"	30	45	M12 x 40	7500	

CC RL ... A Body in anodized aluminium, jaws in brass , springs in spring steel / 1 piece each package + 4 screws for fixing to cylinder

CX RL ... B

Static locking unit

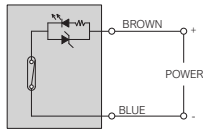
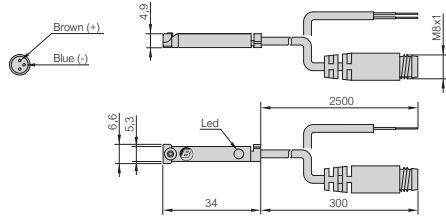


Bore mm	Code	Ø C d11	E1	F1 ±0,3	I	Ø M1 f8	M2	N	P1	Q1 ±0,15	R1	T1 ±0,3	V1	Fixing screw	Locking force N				
32	CX RL 032 B	30	74	±1,4	58	M6	20	45	±0,5	32,5	±0,25	31,5	±0,4	25,5	M5	13	10	M6 x 20	650
40	CX RL 040 B	35	85		65	M6	24	50	±0,55	38		36		30	Gas 1/8"	13	10	M6 x 20	1100
50	CX RL 050 B	40	107	±1,8	82	M8	30	60	±0,75	46,5	±0,3	45,5	±0,5	36	Gas 1/8"	16	12	M8 x 30	1600
63	CX RL 063 B	45	107		82	M8	38	70		±0,75	56,5	±0,4		49,5	40	Gas 1/8"	16	12	M8 x 30
80	CX RL 080 B	45	136	±2,2	110	M10	48	90	±1,0	72	±0,45	61	±0,5	50	Gas 1/8"	20	20	M10 x 35	4000
100	CX RL 100 B	55	143		115	M10	48	105	±1,1	89	±0,5	65		58	Gas 1/8"	20	23	M10 x 35	6300
125	CX RL 125 B	60	187	167	M12	65	140	±1,1		110	±0,6	86,5	80	Gas 1/8"	30	45	M12 x 40	8700	

CC RL ... B Body in anodized aluminium, jaws in brass , springs in spring steel / 1 piece each package + 4 screws for fixing to cylinder

END OF STROKE SENSORS TYPE SR
SRC-61, SRC-21, SRC-27

End of stroke sensor REED - 2 poles N.O.

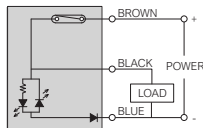
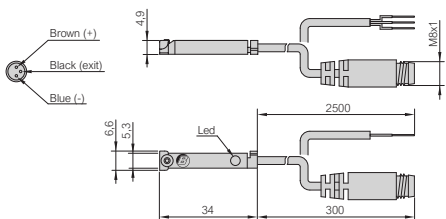

Technical features

Code	SRC-61	SRC-21	SRC-27
Version	Cable 2 x 0,14 mm ²	Cable 2 x 0,14 mm ²	Connector M8 x 1 - 2 pin
Cable length	2500 mm	2500 mm	300 mm
Sensor	REED		
Output	Pure contact, normally open		
Operating voltage	5 ÷ 230 Vac / Vdc	5 ÷ 130 Vac / Vdc	5 ÷ 50 Vac / Vdc
Switching current (max.)	200 mA	200 mA	200 mA
Contact rating (max.)	10 W	6 W	6 W
Voltage drop (max.)	3 V	3 V	3 V
Visual indicator	LED yellow diode		
Operating frequency	1000 Hz		
Working temperature	-15 ÷ +70 °C		
Protection class (IEC 60529))	IP67		
Protection circuit	Power source reverse polarity		
Mounting	Screw for "T" groove - Torque max. 0,15 Nm		

SRC-61, SRC-21, SRC-27 / Sensor in PA6, cable in PUR - 1 piece each package

SRD-21, SRD-27

End of stroke sensor REED - 3 poles N.O.

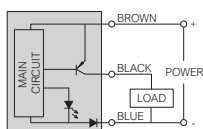
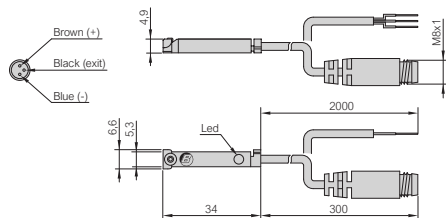

Technical features

Code	SRD-21	SRD-27
Version	Cable 3 x 0,14 mm ²	Connector M8 x 1 - 3 pin
Cable length	2500 mm	300 mm
Sensor	REED	
Output	PNP, normally open	
Operating voltage	5 ÷ 30 Vac / Vdc	
Switching current (max.)	200 mA	
Contact rating (max.)	6 W	
Voltage drop (max.)	0,7 V	
Visual indicator	LED yellow diode	
Operating frequency	1000 Hz	
Working temperature	-15 ÷ +70 °C	
Protection class (IEC 60529))	IP67	
Protection circuit	Power source reverse polarity	
Mounting	Screw for "T" groove - Torque max. 0,15 Nm	

SRD-21, SRD-27 / Sensor in PA6, cable in PUR - 1 piece each package

SRN-21, SRN-27


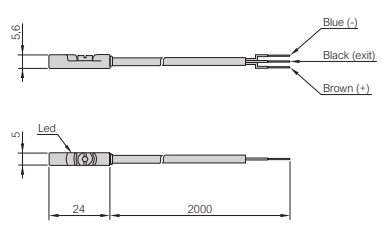
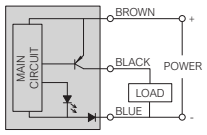
End of stroke sensor HALL PNP - 3 poles N.O.


Technical features


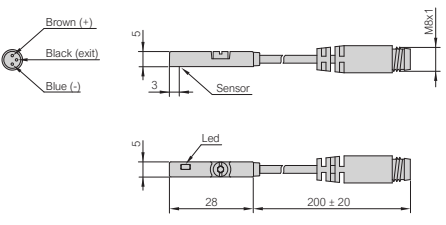
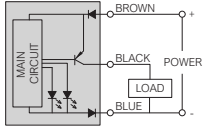
Code	SRN-21	SRN-27
Version	Cable 3 x 0,14 mm ²	Connector M8 x 1 - 3 pin
Cable length	2000 mm	300 mm
Sensor	HALL	
Output	PNP, normally open	
Operating voltage	10 ÷ 30 Vdc	
Switching current (max.)	200 mA	
Contact rating (max.)	4 W	
Voltage drop (max.)	0,7 V	
Visual indicator	LED yellow diode	
Operating frequency	1000 Hz	
Working temperature	-15 ÷ +70 °C	
Protection class (IEC 60529))	IP67	
Protection circuit	Power source reverse polarity	
Mounting	Screw for "T" groove - Torque max. 0,15 Nm	

SRN-21, SRN-27 / Sensor in PA6, cable in PUR - 1 piece each package


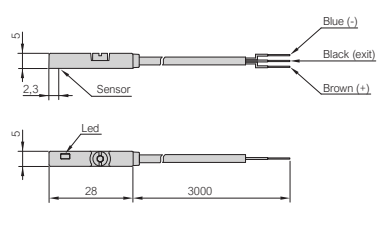
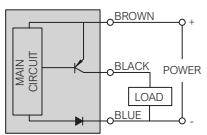
END OF STROKE SENSORS TYPE SK9 with enclosure classification IP69K

<p>SK9-21 End of stroke sensor HALL PNP - 3 poles N.O.</p> 	<p>Technical features</p>																				
	<table border="1"> <tr><td>Code</td><td>SK9-21</td></tr> <tr><td>Version</td><td>Cable 3 x 0,14 mm²</td></tr> <tr><td>Cable length</td><td>2000 mm</td></tr> <tr><td>Sensor</td><td>HALL</td></tr> <tr><td>Output</td><td>PNP, normally open</td></tr> <tr><td>Operating voltage</td><td>10 ÷ 30 Vdc</td></tr> <tr><td>Switching current (max.)</td><td>200 mA</td></tr> <tr><td>Contact rating (max.)</td><td>6 W</td></tr> <tr><td>Current consumption</td><td>10 mA (without load)</td></tr> <tr><td>Voltage drop (max.)</td><td>2,2 V</td></tr> </table>	Code	SK9-21	Version	Cable 3 x 0,14 mm ²	Cable length	2000 mm	Sensor	HALL	Output	PNP, normally open	Operating voltage	10 ÷ 30 Vdc	Switching current (max.)	200 mA	Contact rating (max.)	6 W	Current consumption	10 mA (without load)	Voltage drop (max.)	2,2 V
Code	SK9-21																				
Version	Cable 3 x 0,14 mm ²																				
Cable length	2000 mm																				
Sensor	HALL																				
Output	PNP, normally open																				
Operating voltage	10 ÷ 30 Vdc																				
Switching current (max.)	200 mA																				
Contact rating (max.)	6 W																				
Current consumption	10 mA (without load)																				
Voltage drop (max.)	2,2 V																				
	<table border="1"> <tr><td>Visual indicator</td><td>LED yellow diode: flashing (instable position) permanently light (stable position)</td></tr> <tr><td>Operating frequency</td><td>1000 Hz</td></tr> <tr><td>Temperature range</td><td>-30 ÷ +80 °C</td></tr> <tr><td>Enclosure classification (DIN 40050)</td><td>IP69K</td></tr> <tr><td>Protection circuit</td><td>Short-circuit, power source reverse polarity, power-up pulse</td></tr> <tr><td>Mounting</td><td>Screw for "T" groove - Torque max. 0,3 Nm</td></tr> </table> <p>SK9-21 / Sensor in PA12, cable in PUR - 1 piece each package</p>	Visual indicator	LED yellow diode: flashing (instable position) permanently light (stable position)	Operating frequency	1000 Hz	Temperature range	-30 ÷ +80 °C	Enclosure classification (DIN 40050)	IP69K	Protection circuit	Short-circuit, power source reverse polarity, power-up pulse	Mounting	Screw for "T" groove - Torque max. 0,3 Nm								
Visual indicator	LED yellow diode: flashing (instable position) permanently light (stable position)																				
Operating frequency	1000 Hz																				
Temperature range	-30 ÷ +80 °C																				
Enclosure classification (DIN 40050)	IP69K																				
Protection circuit	Short-circuit, power source reverse polarity, power-up pulse																				
Mounting	Screw for "T" groove - Torque max. 0,3 Nm																				

END OF STROKE SENSORS TYPE SKC with precise positioning sistem

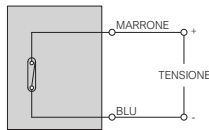
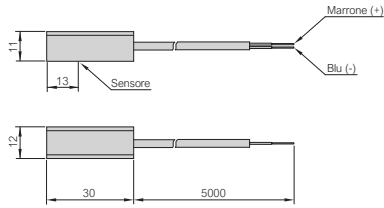
<p>SKC-27 End of stroke sensor HALL PNP - 3 poles N.O.</p> 	<p>Technical features</p>																				
	<table border="1"> <tr><td>Code</td><td>SKC-27</td></tr> <tr><td>Version</td><td>Connector M8 x 1 - 3 pin</td></tr> <tr><td>Cable length</td><td>200 mm</td></tr> <tr><td>Sensor</td><td>HALL</td></tr> <tr><td>Output</td><td>PNP, normally open</td></tr> <tr><td>Operating voltage</td><td>10 ÷ 28 Vdc</td></tr> <tr><td>Switching current (max.)</td><td>80 mA</td></tr> <tr><td>Contact rating (max.)</td><td>2 W</td></tr> <tr><td>Current consumption</td><td>10 mA (24 Vdc)</td></tr> <tr><td>Voltage drop (max.)</td><td>1,5 V</td></tr> </table>	Code	SKC-27	Version	Connector M8 x 1 - 3 pin	Cable length	200 mm	Sensor	HALL	Output	PNP, normally open	Operating voltage	10 ÷ 28 Vdc	Switching current (max.)	80 mA	Contact rating (max.)	2 W	Current consumption	10 mA (24 Vdc)	Voltage drop (max.)	1,5 V
Code	SKC-27																				
Version	Connector M8 x 1 - 3 pin																				
Cable length	200 mm																				
Sensor	HALL																				
Output	PNP, normally open																				
Operating voltage	10 ÷ 28 Vdc																				
Switching current (max.)	80 mA																				
Contact rating (max.)	2 W																				
Current consumption	10 mA (24 Vdc)																				
Voltage drop (max.)	1,5 V																				
	<table border="1"> <tr><td>Leakage current (max.)</td><td>0,05 mA</td></tr> <tr><td>Visual indicator</td><td>Two colors LED diode: red (instable position) green (stable position)</td></tr> <tr><td>Operating frequency</td><td>1000 Hz</td></tr> <tr><td>Temperature range</td><td>-10 ÷ +60 °C</td></tr> <tr><td>Enclosure classification (DIN 40050)</td><td>IP67</td></tr> <tr><td>Protection circuit</td><td>Short-circuit, power source reverse polarity, power-up pulse</td></tr> <tr><td>Mounting</td><td>Screw for "T" groove - Torque max. 0,3 Nm</td></tr> </table> <p>SKC-27 / Sensor in PA, cable in PUR - 1 piece each package</p>	Leakage current (max.)	0,05 mA	Visual indicator	Two colors LED diode: red (instable position) green (stable position)	Operating frequency	1000 Hz	Temperature range	-10 ÷ +60 °C	Enclosure classification (DIN 40050)	IP67	Protection circuit	Short-circuit, power source reverse polarity, power-up pulse	Mounting	Screw for "T" groove - Torque max. 0,3 Nm						
Leakage current (max.)	0,05 mA																				
Visual indicator	Two colors LED diode: red (instable position) green (stable position)																				
Operating frequency	1000 Hz																				
Temperature range	-10 ÷ +60 °C																				
Enclosure classification (DIN 40050)	IP67																				
Protection circuit	Short-circuit, power source reverse polarity, power-up pulse																				
Mounting	Screw for "T" groove - Torque max. 0,3 Nm																				

END OF STROKE SENSORS TYPE SEX for potentially explosive environment ATEX

<p>SEX-21 End of stroke sensor HALL PNP - 3 poles N.O.</p> 	<p>Technical features</p>																				
	<table border="1"> <tr><td>Code</td><td>SEX-21</td></tr> <tr><td>Version</td><td>Cable 3 x 0,14 mm²</td></tr> <tr><td>Cable length</td><td>3000 mm</td></tr> <tr><td>Sensor</td><td>HALL</td></tr> <tr><td>Output</td><td>PNP, normally open</td></tr> <tr><td>Operating voltage</td><td>10 ÷ 28 Vdc</td></tr> <tr><td>Switching current (max.)</td><td>200 mA</td></tr> <tr><td>Contact rating (max.)</td><td>5,5 W</td></tr> <tr><td>Current consumption</td><td>10 mA (24 Vdc)</td></tr> <tr><td>Voltage drop (max.)</td><td>1,5 V</td></tr> </table>	Code	SEX-21	Version	Cable 3 x 0,14 mm ²	Cable length	3000 mm	Sensor	HALL	Output	PNP, normally open	Operating voltage	10 ÷ 28 Vdc	Switching current (max.)	200 mA	Contact rating (max.)	5,5 W	Current consumption	10 mA (24 Vdc)	Voltage drop (max.)	1,5 V
Code	SEX-21																				
Version	Cable 3 x 0,14 mm ²																				
Cable length	3000 mm																				
Sensor	HALL																				
Output	PNP, normally open																				
Operating voltage	10 ÷ 28 Vdc																				
Switching current (max.)	200 mA																				
Contact rating (max.)	5,5 W																				
Current consumption	10 mA (24 Vdc)																				
Voltage drop (max.)	1,5 V																				
	<table border="1"> <tr><td>Leakage current (max.)</td><td>0,05 mA</td></tr> <tr><td>Visual indicator</td><td>LED yellow diode</td></tr> <tr><td>Operating frequency</td><td>1000 Hz</td></tr> <tr><td>Temperature range</td><td>-10 ÷ +70 °C</td></tr> <tr><td>Enclosure classification (IEC 60529)</td><td>IP67</td></tr> <tr><td>Protection circuit</td><td>Short-circuit, power source reverse polarity, power-up pulse</td></tr> <tr><td>Mounting</td><td>Screw for "T" groove - Torque max. 0,3 Nm</td></tr> <tr><td>ATEX marking (2014/34/EU)</td><td>II 3GD Ex ic IIB T4 Gc Ex ic IIIC T135°C Dc</td></tr> </table> <p>SEX-21 / Sensor in PA, cable PVC - 1 piece each package</p>	Leakage current (max.)	0,05 mA	Visual indicator	LED yellow diode	Operating frequency	1000 Hz	Temperature range	-10 ÷ +70 °C	Enclosure classification (IEC 60529)	IP67	Protection circuit	Short-circuit, power source reverse polarity, power-up pulse	Mounting	Screw for "T" groove - Torque max. 0,3 Nm	ATEX marking (2014/34/EU)	II 3GD Ex ic IIB T4 Gc Ex ic IIIC T135°C Dc				
Leakage current (max.)	0,05 mA																				
Visual indicator	LED yellow diode																				
Operating frequency	1000 Hz																				
Temperature range	-10 ÷ +70 °C																				
Enclosure classification (IEC 60529)	IP67																				
Protection circuit	Short-circuit, power source reverse polarity, power-up pulse																				
Mounting	Screw for "T" groove - Torque max. 0,3 Nm																				
ATEX marking (2014/34/EU)	II 3GD Ex ic IIB T4 Gc Ex ic IIIC T135°C Dc																				

END OF STROKE SENSORS TYPE SHT for high temperature
SHT-21

End of stroke sensor REED - 2 poles N.O.

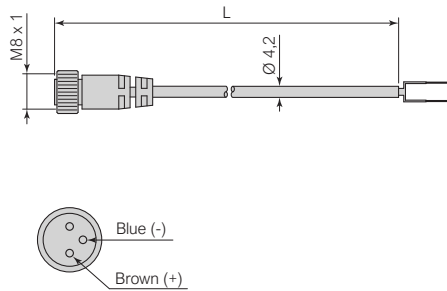

Technical features

Code	SHT-21
Version	Cable 2 x 0,14 mm ²
Cable length	5000 mm
Sensor	REED
Output	Pure contact, normally open
Operating voltage	5 ÷ 240 Vac / Vdc
Switching current (max.)	500 mA
Contact rating (max.)	10 W
Voltage drop (max.)	0,5 V
Visual indicator	None
Operating frequency	200 Hz
Temperature range	-10 ÷ +140 °C
Enclosure classification (IEC 60529)	IP67
Protection circuit	None
Mounting	Only with braket CC SHT

SHT-21 / Sensor in Al, cable in PTFE - 1 piece each package

THREADED CONNECTORS TYPE Y082LC SUITABLE FOR SRC-27
Y082LC ...

Threaded connectors - 2 poles

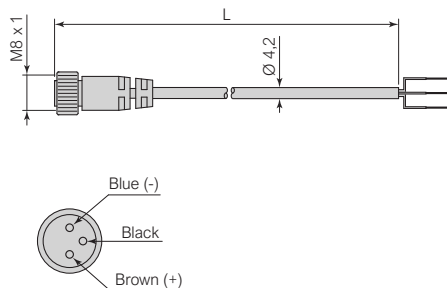
Technical features


Code	Y082LC250C	Y082LC500C
Threaded connector	M8 x 1	
End connector	Open	
Cable	2 x 0,14 mm ²	
Cable length (L)	2500 mm	5000 mm
Operating voltage (max.)	50 Vac / 60 Vdc	
Current (max.)	3000 mA	
Working temperature	-25 ÷ +75 °C	
Protection class (IEC 60529)	IP67	

Y082LC ... / Connector in PVC, contacts in gilded brass, cable in PVC - 1 piece each package

THREADED CONNECTORS TYPE Y083LC SUITABLE FOR SRD-27, SRN-27, SKC-27
Y083LC ...

Threaded connectors - 3 poles

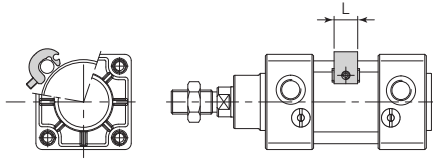
Technical features


Code	Y083LC250D	Y083LC500D
Threaded connector	M8 x 1	
End connector	Open	
Cable	3 x 0,14 mm ²	
Cable length (L)	2500 mm	5000 mm
Operating voltage (max.)	50 Vac / 60 Vdc	
Current (max.)	3000 mA	
Working temperature	-25 ÷ +75 °C	
Protection class (IEC 60529)	IP67	

Y083LC ... / Connector in PVC, contacts in gilded brass, cable in PVC - 1 piece each package

FIXING BRACKET TYPE ST10 - ST11 for cylinders with round profile and tie rods
ST-10 - ST-11

Fixing bracket for end of stroke sensor

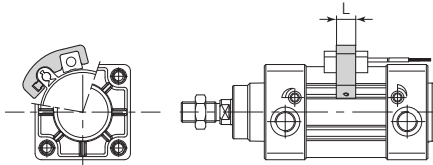


Bore mm	Code	L	Set head screw for fixing to cylinder
32	ST-10	12	M5 x 10
40	ST-10	12	M5 x 10
50	ST-10	12	M5 x 10
63	ST-10	12	M5 x 10
80	ST-11	14	M5 x 15
100	ST-11	14	M5 x 15
125	ST-11	14	M5 x 15

ST-... Bracket: Anodised aluminium - Screw and plate: steel / 1 piece each package + 1 set head screw for fixing to cylinder

FIXING BRACKET TYPE CD SHT
CD SHT ...

Fixing bracket for SHT-21 end of stroke sensor



Bore mm	Code	L	Set head screw for fixing to sensor	Set head screw for fixing to cylinder
32	CD SHT 032	12	M2,6 x 6	M4 x 10
40	CD SHT 040	12	M2,6 x 6	M4 x 10
50	CD SHT 050	12	M2,6 x 6	M4 x 10
63	CD SHT 063	12	M2,6 x 6	M4 x 10
80	CD SHT 080	12	M2,6 x 6	M4 x 10
100	CD SHT 100	12	M2,6 x 6	M4 x 10
125	CD SHT 125	12	M2,6 x 6	M4 x 10

CD SHT ... Anodized aluminium / 1 piece each package + 1 set head screw for fixing to sensor SHT + 1 set head screw for fixing to cylinder



BONESI PNEUMATIK realizza tutti i suoi prodotti in Italia



BONESI PNEUMATIK s.r.l.

Via A. Robino n. 117
20025 Legnano (MI) Italy
P.I. / C.F. 10396340159
R.E.A. 1373315

www.bonesipneumatik.it
info@bonesipneumatik.it
Phone +39 0331 448000
Telefax +39 0331 448070